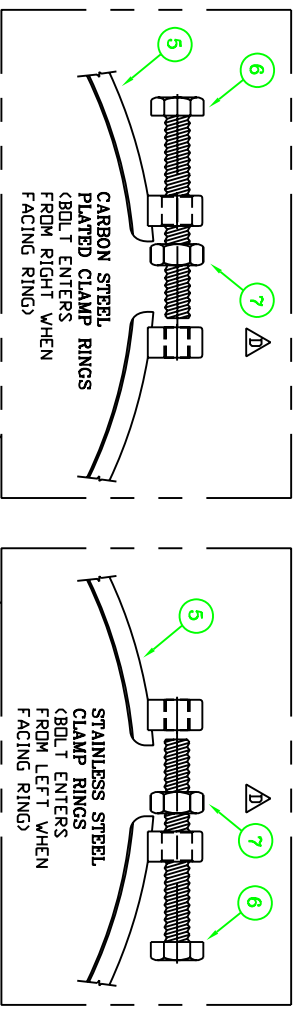


SERVICE PARTS INFORMATION

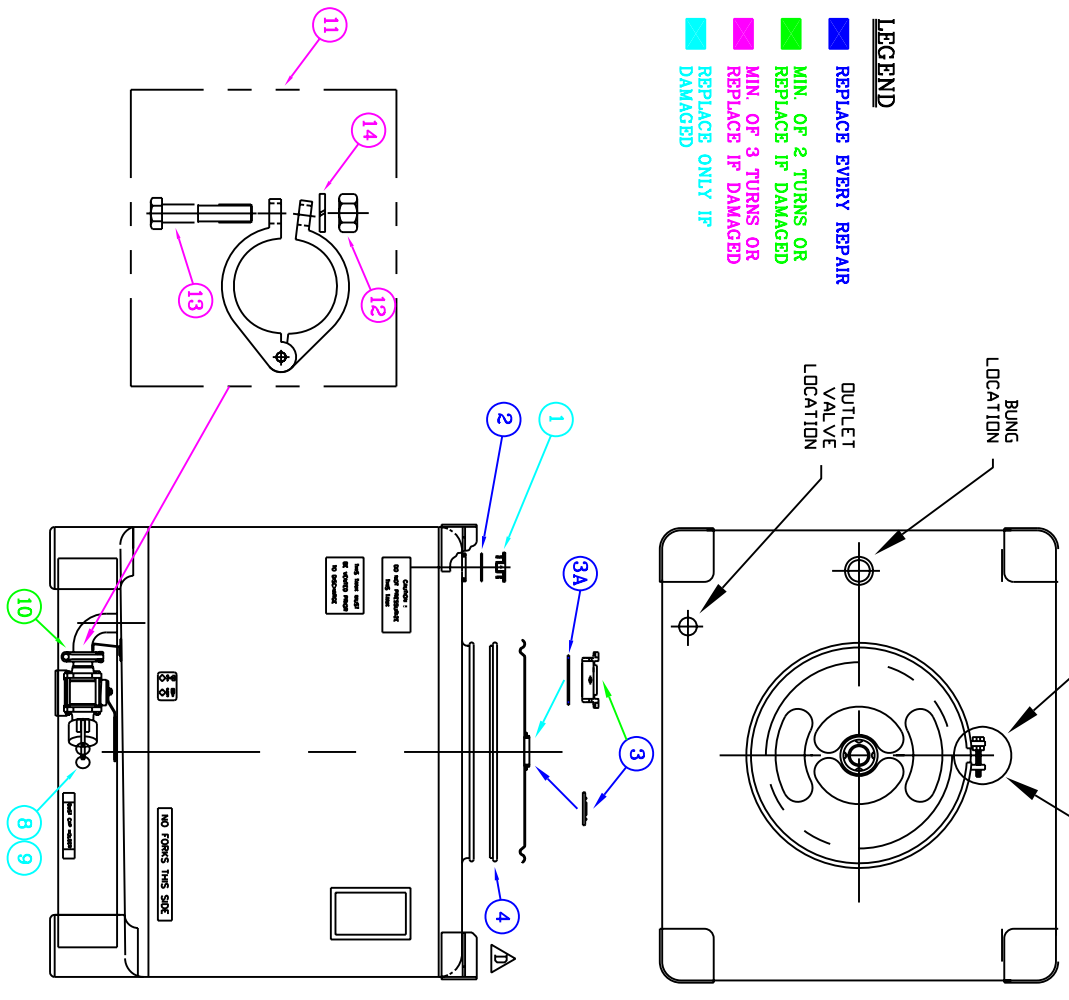
ITEM	QTY.	DESCRIPTION	MAT'L.	AMI PART #
1	1	SAPBUNG - ELECTROPOLISHED	316 SS	110885-B
2	1	GASKET - BUNG, .19 THK	EPDM	113843
3	1	PLUG - POLYGRIP FUSIBLE VENT WITH CRIMP RING	HDPE/SS	110647
		FUZVENT - 3" NPS, FUSIBLE VENT	HDPE	111726
3A	1	GASKET - FOR FUZVENT	EPDM	113847
4	1	GASKET - DRUM TOP CHIME	EPDM	114324
5	1	RING - CLAMP, RELIEVED ENDS	304 SS	113842
6	1	SCREW - 5/8-11 x 5.00 HEX HEAD CAP	ZINC PLATED	110676
7	1	NUT - 5/8-11 HEX FINISHED JAM GR-2	ZINC PLATED	114510
8	--	-----	-----	-----
9	1	CAP - DUST, 2" KAMLOCK WITH STRAIGHT ARMS	316 SS	111257-B
10	1	GASKET - SANITARY CONNECTION	TPE	110599
11	1	CLAMP ASSEMBLY - 2" I-LINE (INCL. SS SCREW & NYLOCK NUT)	316 S/S	110651
12	1	NUT - 1/2-13 HEX GR-2	ZINC PLATED	110585
13	1	SCREW - 1/2-13 x 2" LG. HHCS, GR-5	ZINC PLATED	111601
14	1	WASHER - 1/2 SPLIT LOCK	ZINC PLATED	110617

\* DEPENDENT ON COVER ASSEMBLY  
 \*\* 113842 IS PREFERRED COMPONENT, 111410-B IS OPTIONAL FOR URGENT SITUATION ONLY



LEGEND

- REPLACE EVERY REPAIR
- MIN. OF 2 TURNS OR REPLACE IF DAMAGED
- MIN. OF 3 TURNS OR REPLACE IF DAMAGED
- REPLACE ONLY IF DAMAGED



ZONE	REV	REVISION DESCRIPTION	DATE	REVISED BY	APPROVED BY
--	E	DET. #8 REMOVED WAS 110029 / DET. #9 WAS 111334	25-MAR-04	REICH	G.P.S.
--	D	DET. #7 WAS 110587 / DET. #4 WAS 110819-B	22-APR-03	M.C.S.	REICH
--	C	ADDED DET. 3A	26-SEP-02	M.C.S.	REICH
--	B	DET 12 WAS 110613, DET 13 WAS 25'	26-MAR-02	REICH	G.P.S.
--	B	DET 1 WAS 110885, DET 2 WAS 110615, DET 4 WAS 110819, DET 9 WAS 11257	26-MAR-02	REICH	G.P.S.
--	A	DET. 5 WAS 110878 & 110572, DET. 12 WAS 110613, ADDED DET. 14	11-MAR-02	REICH	G.P.S.

UNLESS OTHERWISE SPECIFIED DIMENSIONS ARE IN INCHES GENERAL TOLERANCES

AMERICAN MACHINING, INC.  
 FENTON, MICHIGAN

PORTABLE TANK

SERVICE PARTS INFORMATION

PART NUMBER 114233

FRACOINS: DECIMALS: .010 ± .005 ± .001 ANGLES: ± 1°

FINISH: N/A

PROJECTION: DO NOT SCALE THIS DRAWING BREAK ALL SHARP EDGES REMOVE BURRS & FLASH

DRAWN BY: M. SCHULTE 26-SEP-02

CHECKED BY:

APPROVED BY: DATE

SCALE: NONE MAT'L: N/A

SHEET 1 OF 2

- REPLACE EVERY REPAIR
- MIN. OF 2 TURNS OR REPLACE IF DAMAGED
- MIN. OF 3 TURNS OR REPLACE IF DAMAGED
- REPLACE ONLY IF DAMAGED

ZONE	REV	REVISION DESCRIPTION	DATE	REVISED BY	APPROVED BY
--	E	DET. #8 REMOVED WAS 110029 / DET. #9 WAS 111334	25-MAR-04	REICH	G.P.S.
--	D	DET. #7 WAS 110587 / DET. #4 WAS 110819-B	22-APR-03	M.C.S.	REICH
--	C	ADDED DET. 3A	26-SEP-02	M.C.S.	REICH
--	B	DET 12 WAS 110613, DET 13 WAS 25'	26-MAR-02	REICH	G.P.S.
--	B	DET 1 WAS 110885, DET 2 WAS 110615, DET 4 WAS 110819, DET 9 WAS 11257	26-MAR-02	REICH	G.P.S.
--	A	DET. 5 WAS 110878 & 110572, DET. 12 WAS 110613, ADDED DET. 14	11-MAR-02	REICH	G.P.S.

UNLESS OTHERWISE SPECIFIED DIMENSIONS ARE IN INCHES GENERAL TOLERANCES

AMERICAN MACHINING, INC.  
 FENTON, MICHIGAN

PORTABLE TANK

SERVICE PARTS INFORMATION

PART NUMBER 114233

FRACOINS: DECIMALS: .010 ± .005 ± .001 ANGLES: ± 1°

FINISH: N/A

PROJECTION: DO NOT SCALE THIS DRAWING BREAK ALL SHARP EDGES REMOVE BURRS & FLASH

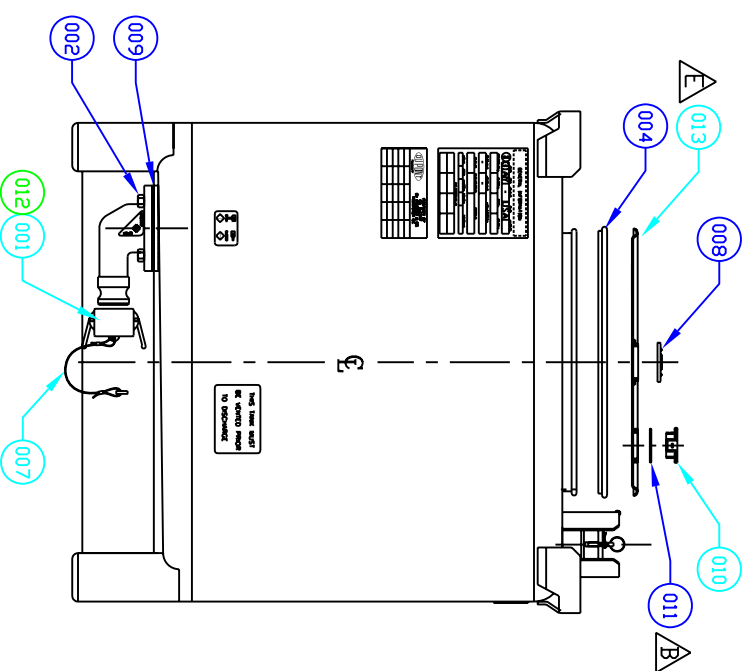
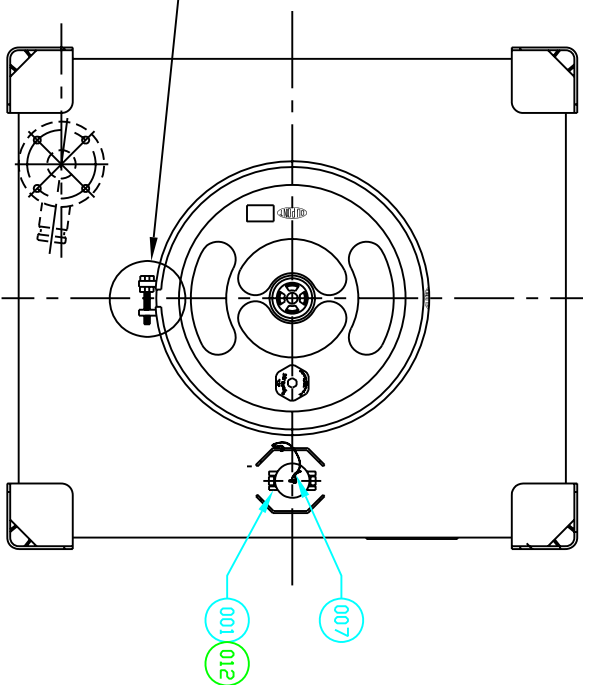
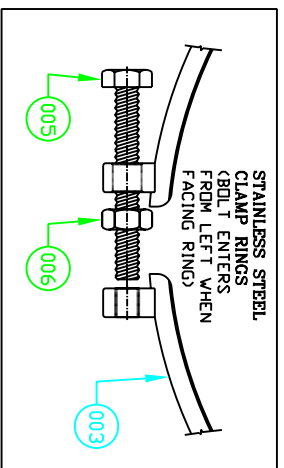
DRAWN BY: M. SCHULTE 26-SEP-02

CHECKED BY:

APPROVED BY: DATE

SCALE: NONE MAT'L: N/A

SHEET 2 OF 2



Replace every repair  
 Min. 2 turns or replace if damaged  
 Min. 3 turns or replace if damaged  
 Replace only if damaged  
 Not applicable

-	E	ADDED DET. # 013	REICH	GPS
-	D	DET. # 007 DESCRIPTION WAS "MANUFACTURED"	REICH	GPS
-	C	DET. # 012 DESCRIPTION WAS "MANUFACTURED"	REICH	GPS
-	B	DET. # 011 WAS 110615	VJF	B.R.
-	A	ADDED COMPONENT TYPE COLUMN	M.C.S.	B.R.
ZONE	REV	REVISION DESCRIPTION	DATE	APPROVED BY

UNLESS OTHERWISE SPECIFIED  
 DIMENSIONS ARE IN INCHES  
 GENERAL TOLERANCES

AMERICAN MACHINING, INC.  
 FENTON, MICHIGAN

PORTABLE TANK  
 SERVICE PARTS INFORMATION

AMERICAN MACHINING, INC.  
 FENTON, MICHIGAN

THIS DRAWING HAS BEEN FURNISHED BY AMERICAN MACHINING, INC. THE INFORMATION AND KNOW-HOW CONTAINED MAY NOT BE USED NOR MAY THE DRAWING BE REPRODUCED WITHOUT THE WRITTEN PERMISSION OF AMERICAN MACHINING, INC. ALL REPRODUCTIONS IN WHOLE OR IN PART, INCLUDING VENDOR SHOP DRAWINGS, SHALL BEAR OR REFER TO THIS NOTE.

APPROVED BY: DATE

SCALE: NONE MAT'L: N/A

SHEET 1 OF 2

ITEM NO.	PART NUMBER	QTY.	DESCRIPTION	TURNS
001	111257	2	CAP - 2" DUST 316 SS W/STRAIGHT ARMS	
002	110588	4	NUT - 5/8-11 HEX FINISH NYLOC ZINC PLATED	
003	113842	1	RING - CLAMP ASSY 304 SS ELECTROPOLISHED	
004	114324	1	GASKET - BLACK	
005	110676	1	BOLT - 5/8-11 X 5" LG BTA GR-5 ZINC PLT	
006	114510	1	NUT - 5/8-11 HEX FINISHED JAM GR-2 ZINC PLT	
007	110029	2	LANYARD - 13" LG ASSEMBLY	
008	110647	1	PLUG - 2" RIEKE POLY GRIP FUSIBLE VENT	
009	-----	1	GASKET - VALVE DEPENDENT	
010	110885	1	SAFBUNG - 2" NPS ELECTROPOLISHED 316L SS	
011	113843	1	GASKET - 2" BUNG WHITE	
012	110717	1	GASKET - DUST CAP WHITE	
013	110467	1	COVER - 16 GA ASSY (INCLUDES DET. #008, 010, & 011)	

Replace every repair  
 Min. 2 turns or replace if damaged  
 Min. 3 turns or replace if damaged  
 Replace only if damaged  
 Not applicable

-	E	ADDED DET. # 013	REICH	GPS
-	D	DET. # 007 DESCRIPTION WAS "MANUFACTURED"	REICH	GPS
-	C	DET. # 012 DESCRIPTION WAS "MANUFACTURED"	REICH	GPS
-	B	DET. # 011 WAS 110615	VJF	B.R.
-	A	ADDED COMPONENT TYPE COLUMN	M.C.S.	B.R.
ZONE	REV	REVISION DESCRIPTION	DATE	APPROVED BY

UNLESS OTHERWISE SPECIFIED  
 DIMENSIONS ARE IN INCHES  
 GENERAL TOLERANCES

AMERICAN MACHINING, INC.  
 FENTON, MICHIGAN

PORTABLE TANK  
 SERVICE PARTS INFORMATION

AMERICAN MACHINING, INC.  
 FENTON, MICHIGAN

THIS DRAWING HAS BEEN FURNISHED BY AMERICAN MACHINING, INC. THE INFORMATION AND KNOW-HOW CONTAINED MAY NOT BE USED NOR MAY THE DRAWING BE REPRODUCED WITHOUT THE WRITTEN PERMISSION OF AMERICAN MACHINING, INC. ALL REPRODUCTIONS IN WHOLE OR IN PART, INCLUDING VENDOR SHOP DRAWINGS, SHALL BEAR OR REFER TO THIS NOTE.

APPROVED BY: DATE

SCALE: NONE MAT'L: N/A

SHEET 2 OF 2